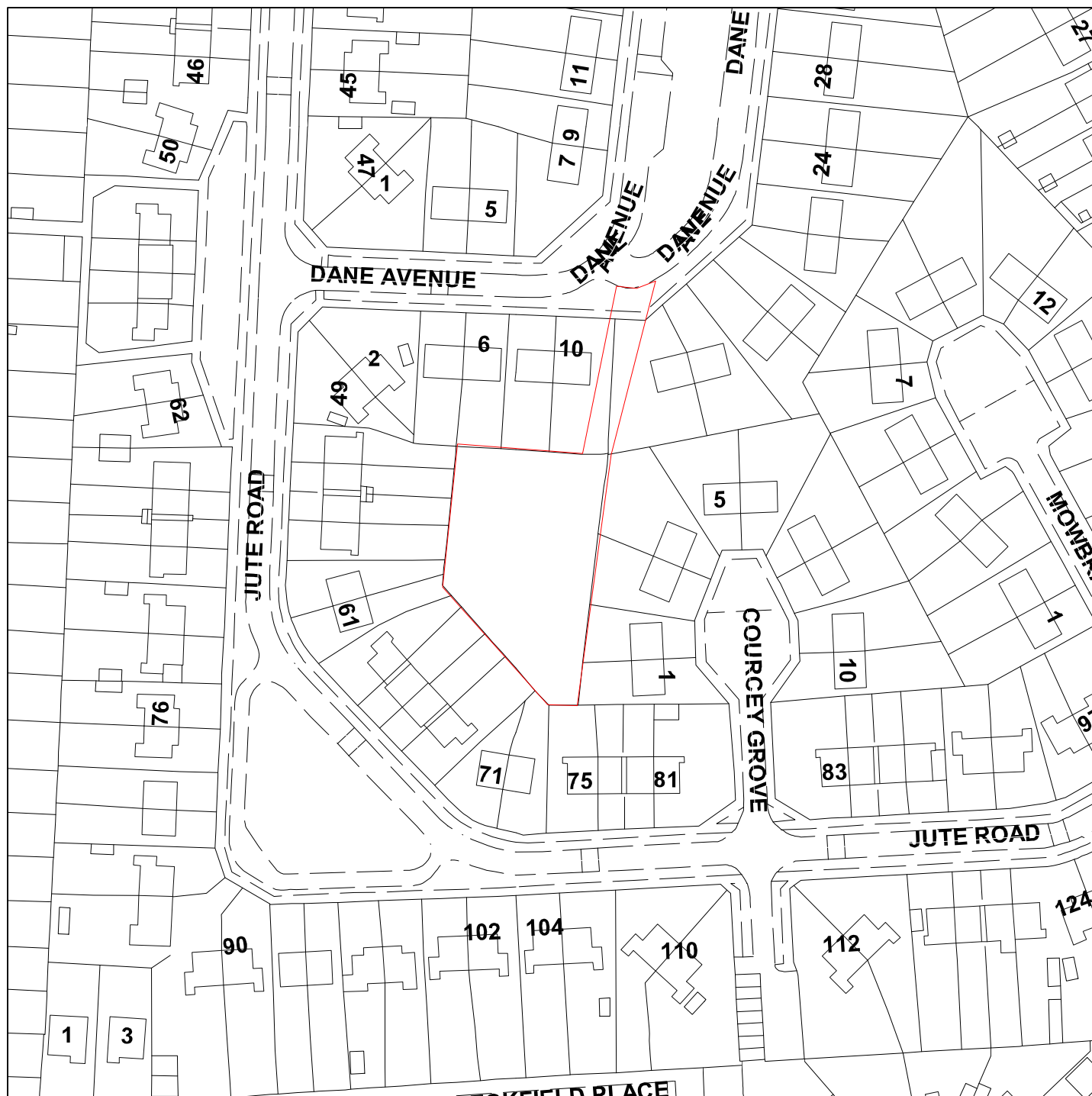


Land to rear of 6 to 10 Dane Avenue, York

07/02738/FUL



GIS by ESRI (UK)



Scale : 1:1250

Reproduced from the Ordnance Survey map with the permission of the Controller of Her Majesty's Stationery Office © Crown Copyright 2000.

Unauthorised reproduction infringes Crown Copyright and may lead to prosecution or civil proceedings.

Produced using ESRI (UK)'s MapExplorer 2.0 - <http://www.esriuk.com>

| | |
|---------------------|----------------------|
| Organisation | City of York Council |
| Department | City Strategy |
| Comments | Application site |
| Date | 04 February 2008 |
| SLA Number | Not set |